



# Business Activity Profile

June 2016

## At a glance

The following table compares current month data with the previous month and the same time previous year.

Service/Product description	Comparison		
	Jun 2016	May 2016	Jun 2015
Total Document Lodgements	30,934	27,801 11.27%	34,852 11.24%
Transfer Lodgements	7,174	6,172 16.23%	8,413 14.73%
Mortgage Lodgements	8,780	7,709 13.89%	10,122 13.26%
Searches	132,768	137,730 3.60%	158,516 16.24%
Electronic Advice of Sale Lodgements	5,493	5,810 5.46%	6,491 15.38%
Subdivisional Lots Created	807	1,609 49.84%	1,284 37.15%
Strata Lots Created	1,133	1,347 15.89%	1,039 9.05%
New Lots Created	1,940	2,956 34.37%	2,323 16.49%
Strata Plan and Survey Strata Plan Lodgements	222	242 8.26%	224 0.89%



### Landgate celebrates NAIDOC week

Landgate took part in the official opening of NAIDOC celebrations at the Midland Oval on Tuesday 5 July 2016.

Landgate Chief Executive Mike Bradford gave a speech at the flag-raising ceremony about Landgate's commitment to increasing Aboriginal employment, and the Geographic Names Committee's work in preserving different languages by registering place names.

He then presented an Earth is Art work to the local NAIDOC committee before participating in the flag-raising ceremony.

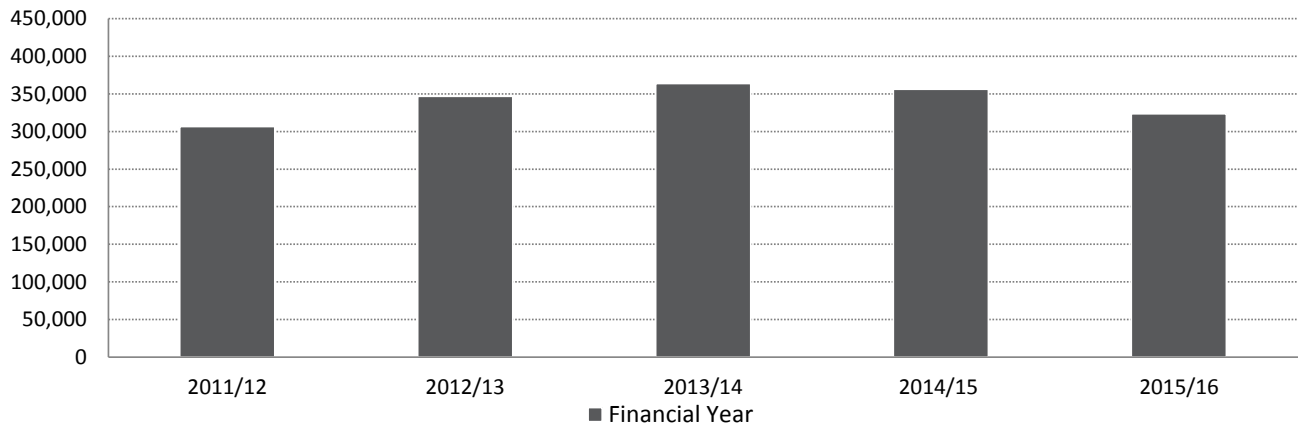
Landgate also held a morning tea on Monday 4 July 2016 with speaker, Aboriginal elder Di Ryder. Ms Ryder spent 21 years in the army, has worked as an Aboriginal community development officer in Sydney and is the president of the Aboriginal and Torres Strait Islander Veterans and Services Association.

This year's theme was Songlines – The living narrative of our nation. It encourages Australians to explore and celebrate how, through Songlines, Aboriginal and Torres Strait Islander peoples remain connected to country and culture in an unbroken line going back tens-of-thousands of years.

NAIDOC week celebrates the history, culture and achievements of Aboriginal and Torres Strait Islander peoples. Read more about [NAIDOC](#).

## Total Document Lodgements, by financial year

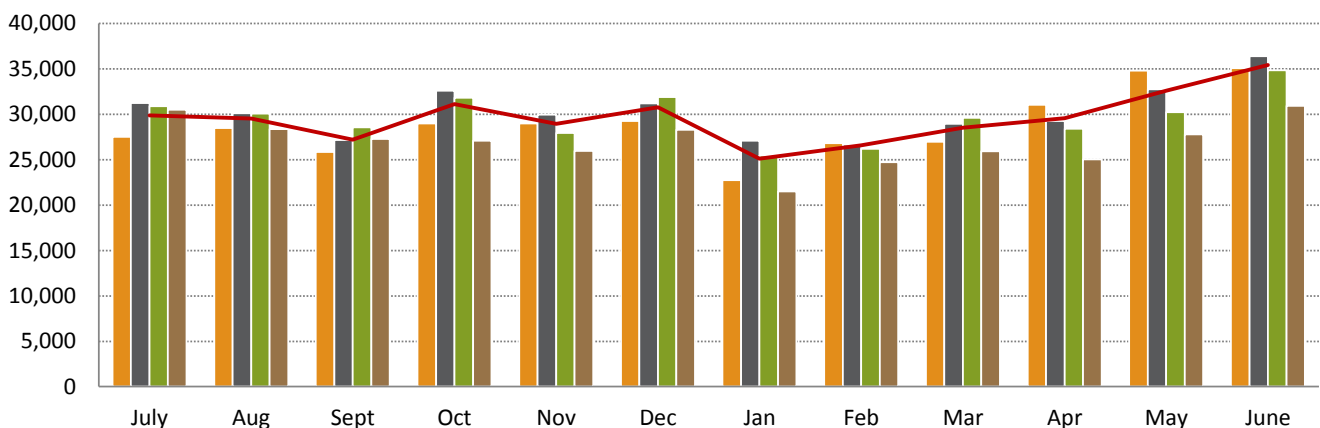
Total document lodgements 2015/16 year to date (323,474) reflect a 9.14% decrease when compared to the same time 2014/15 (356,010).



Financial Year	11/12	12/13	13/14	14/15	15/16
Total Lodgements July to June	306,558	346,610	363,477	356,010	323,474

## Total Document Lodgements, by month

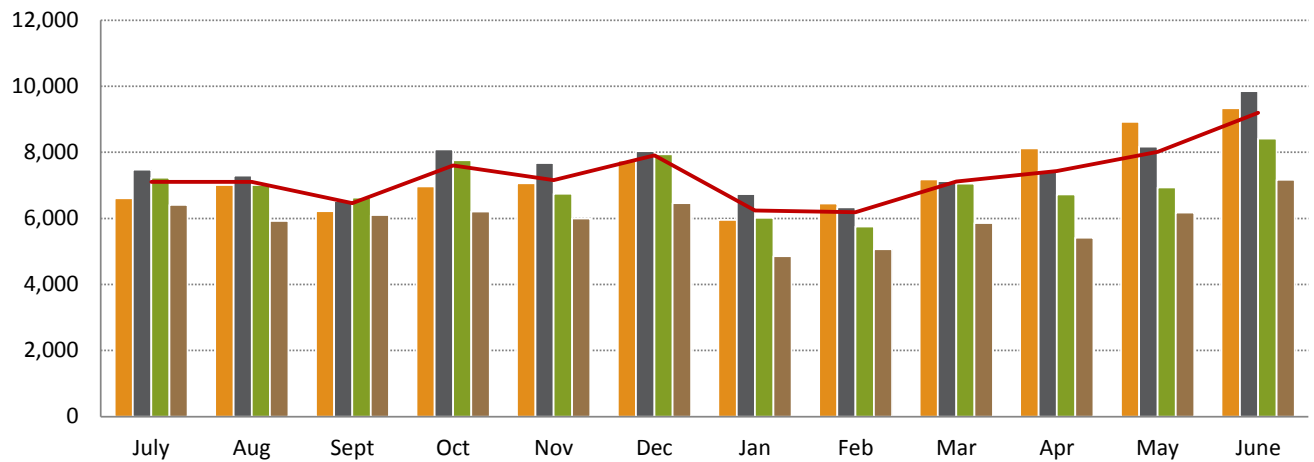
The number of documents lodged in June 2016 (30,934) increased 11.27% from the previous month (27,801) and decreased 11.24% from June 2015 (34,852).



	July	Aug	Sept	Oct	Nov	Dec	Jan	Feb	Mar	Apr	May	June
12/13	27,515	28,481	25,847	29,007	29,006	29,264	22,732	26,834	26,984	31,041	34,828	35,071
13/14	31,263	30,118	27,174	32,606	29,965	31,201	27,093	26,669	28,956	29,261	32,748	36,423
14/15	30,898	30,068	28,560	31,816	27,949	31,898	25,483	26,213	29,617	28,417	30,239	34,852
15/16	30,525	28,376	27,270	27,105	25,982	28,291	21,495	24,723	25,930	25,042	27,801	30,934
3 Year Avg (12/13 - 14/15)	29,892	29,556	27,194	31,143	28,973	30,788	25,103	26,572	28,519	29,573	32,605	35,449

## Transfer Lodgements, by month

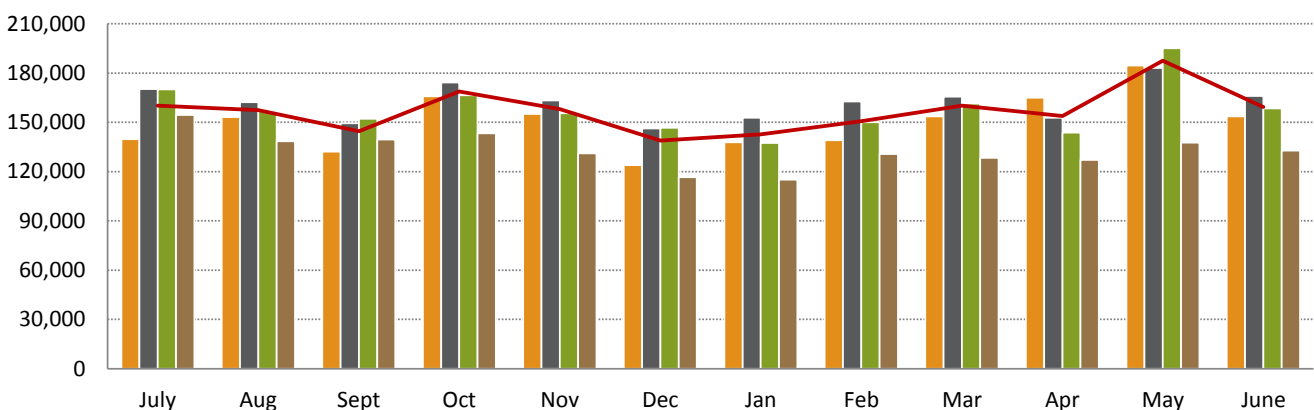
Transfer documents lodged in June 2016 (7,174) increased 16.23% from the previous month (6,172) and decreased 14.73% from June 2015 (8,413). The number of mortgages lodged during June 2016 (8,780) increased 13.89% from the previous month (7,709) and decreased 13.26% from June 2015 (10,122).



	July	Aug	Sept	Oct	Nov	Dec	Jan	Feb	Mar	Apr	May	June
12/13	6,606	7,007	6,217	6,969	7,068	7,756	5,952	6,452	7,181	8,116	8,923	9,337
13/14	7,475	7,294	6,530	8,085	7,672	8,036	6,741	6,335	7,131	7,449	8,175	9,851
14/15	7,228	7,016	6,626	7,759	6,742	7,938	6,018	5,759	7,053	6,730	6,940	8,413
15/16	6,414	5,927	6,106	6,204	5,993	6,460	4,853	5,064	5,861	5,414	6,172	7,174
3 Year Avg (12/13 - 14/15)	7,103	7,106	6,458	7,604	7,161	7,910	6,237	6,182	7,122	7,432	8,013	9,200

## Search Activities, by month

The number of searches for June 2016 (132,768) decreased 3.60% from the previous month (137,730) and decreased 16.24% from June 2015 (158,516).

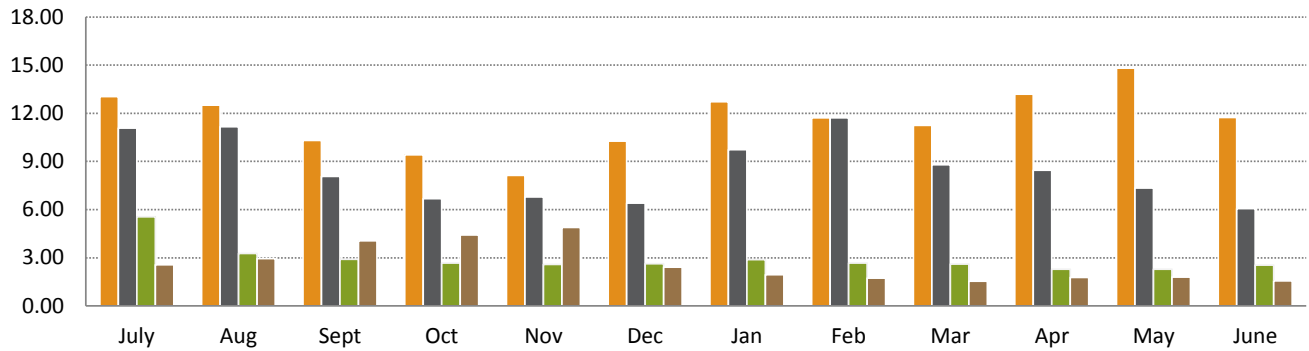


	July	Aug	Sept	Oct	Nov	Dec	Jan	Feb	Mar	Apr	May	June
12/13	139,829	153,219	132,088	165,964	155,039	124,079	137,875	139,189	153,605	165,040	184,617	153,749
13/14	170,374	162,359	149,405	174,207	163,439	146,356	152,792	162,818	165,751	152,837	183,237	166,079
14/15	170,172	156,893	152,229	166,408	155,655	146,637	137,368	150,146	161,484	143,831	195,083	158,516
15/16	154,413	138,603	139,497	143,355	131,093	116,599	115,180	130,809	128,384	127,037	137,730	132,768
3 Year Avg (12/13 - 14/15)	160,125	157,490	144,574	168,860	158,044	139,024	142,678	150,718	160,280	153,903	187,646	159,448

## Time to register a transaction against a Certificate of Title, by month

Target: 75% of documents within 5.2 days

During June 2016 the average number of days to register a transaction against a Certificate of Title was 1.57 days, a marginal decrease compared to the previous month (1.80 days).

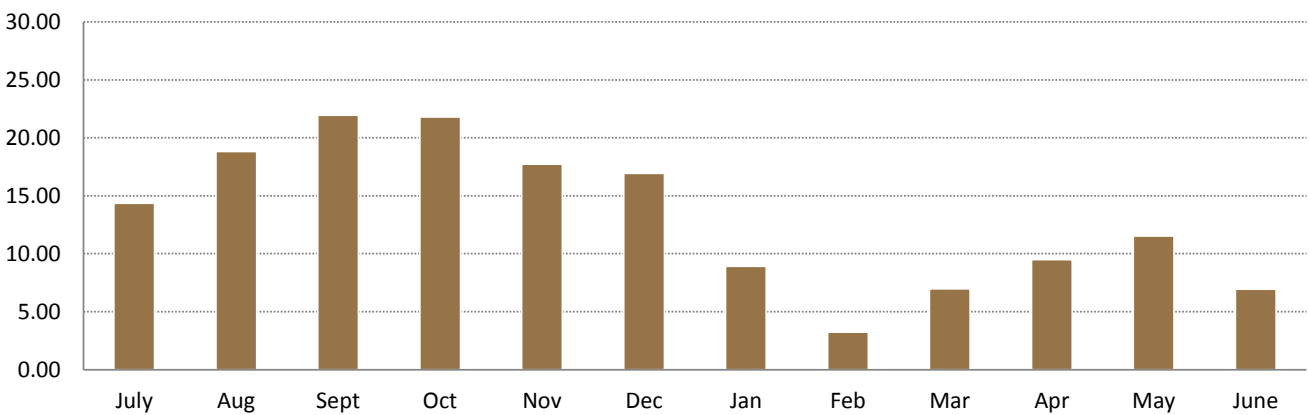


	July	Aug	Sept	Oct	Nov	Dec	Jan	Feb	Mar	Apr	May	June
12/13	13.05	12.50	10.31	9.42	8.13	10.26	12.72	11.72	11.25	13.20	14.82	11.74
13/14	11.08	11.16	8.08	6.68	6.79	6.41	9.73	11.73	8.80	8.45	7.35	6.07
14/15	5.56	3.26	2.90	2.68	2.59	2.62	2.88	2.66	2.61	2.28	2.29	2.55
15/16	2.57	2.95	4.06	4.41	4.90	2.41	1.95	1.74	1.53	1.78	1.80	1.57

## Time to register a Certificate of Title for a large subdivision, by month

Target: 10 days

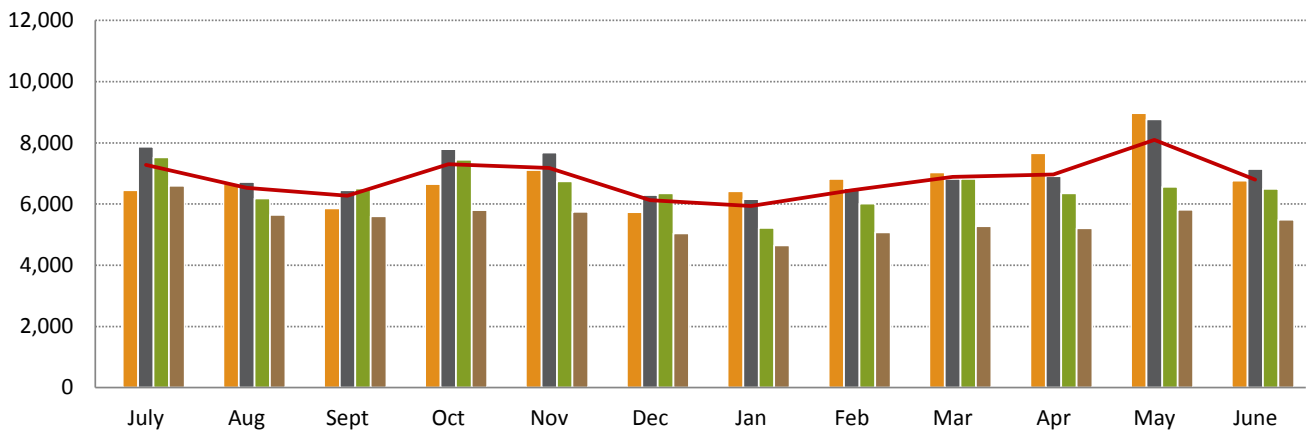
During June 2016 the average number of days to register a Certificate of Title for subdivisions was 6.94 days, a decrease compared to the previous month (11.52 days).



	July	Aug	Sept	Oct	Nov	Dec	Jan	Feb	Mar	Apr	May	June
15/16	14.36	18.84	21.95	21.80	17.72	16.95	8.91	3.25	6.98	9.50	11.52	6.94

## Electronic Advice of Sale (EAS) lodgements, by month

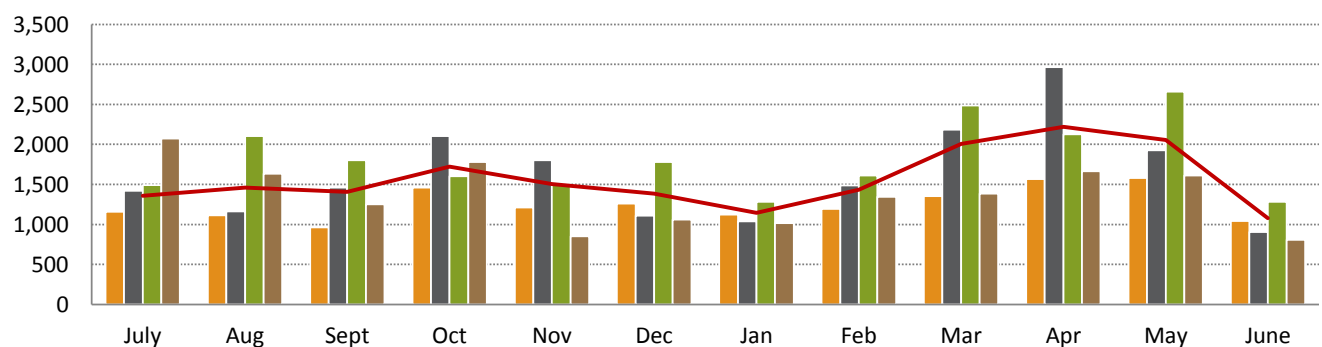
A total of 5,493 lodgements were registered during June 2016, a 5.46% decrease from the previous month (5,810) and a 15.38% decrease from June 2015 (6,491).



	July	Aug	Sept	Oct	Nov	Dec	Jan	Feb	Mar	Apr	May	June
12/13	6,446	6,675	5,853	6,657	7,109	5,731	6,418	6,818	7,030	7,663	8,975	6,763
13/14	7,877	6,720	6,448	7,797	7,678	6,296	6,165	6,522	6,817	6,905	8,767	7,149
14/15	7,524	6,184	6,507	7,443	6,743	6,345	5,220	6,015	6,821	6,345	6,565	6,491
15/16	6,599	5,643	5,602	5,799	5,743	5,045	4,649	5,078	5,274	5,208	5,810	5,493
3 Year Avg (12/13 - 14/15)	7,282	6,526	6,269	7,299	7,177	6,124	5,934	6,452	6,889	6,971	8,102	6,801

## Number of subdivisional lots, by month

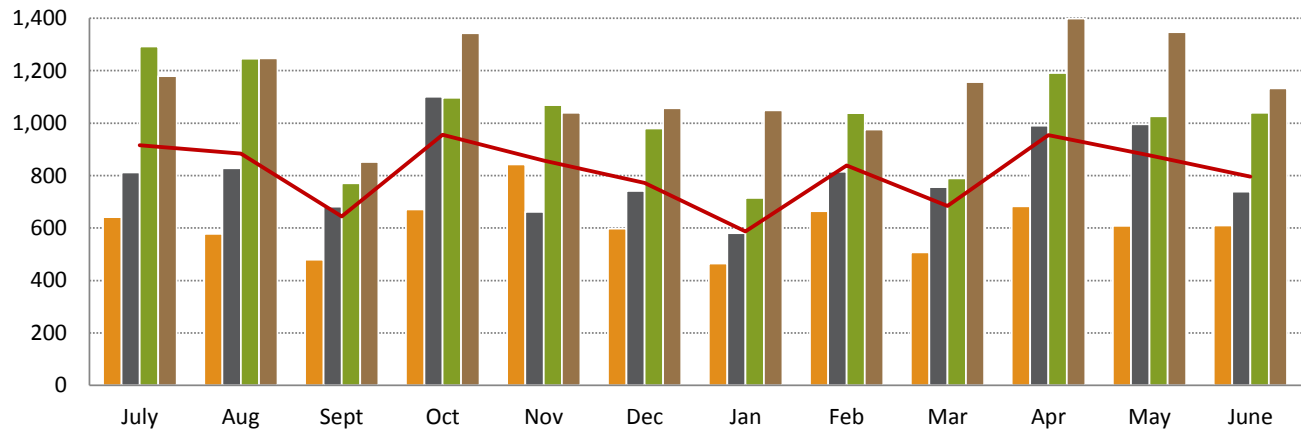
During June 2016, 807 sub-divisional lots were created, a 49.84% decrease from the previous month (1,609) and a 37.15% decrease from June 2015 (1,284).



	July	Aug	Sept	Oct	Nov	Dec	Jan	Feb	Mar	Apr	May	June
12/13	1,158	1,115	963	1,460	1,210	1,259	1,121	1,195	1,352	1,567	1,581	1,041
13/14	1,418	1,162	1,459	2,104	1,803	1,110	1,037	1,487	2,186	2,965	1,927	904
14/15	1,493	2,106	1,803	1,602	1,503	1,781	1,281	1,612	2,487	2,128	2,658	1,284
15/16	2,072	1,634	1,252	1,781	851	1,061	1,014	1,343	1,383	1,665	1,609	807
3 Year Avg (12/13 - 14/15)	1,356	1,462	1,408	1,722	1,505	1,383	1,146	1,431	2,008	2,220	2,055	1,076

## Number of Strata Title Lots, by month

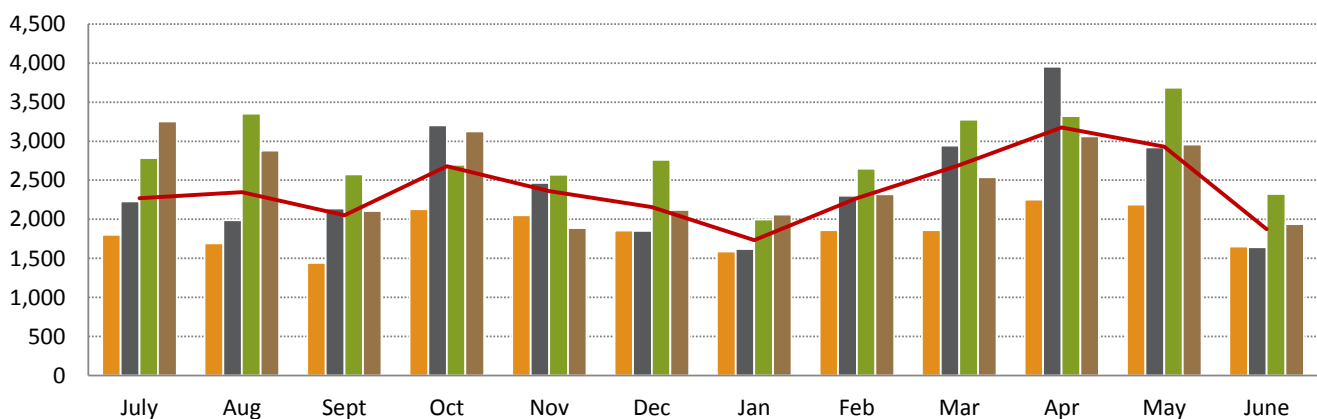
During June 2016, 222 strata plans were lodged creating 1,133 strata lots, a 15.89% decrease from the previous month (1,347) and a 9.05% increase from June 2015 (1,039).



	July	Aug	Sept	Oct	Nov	Dec	Jan	Feb	Mar	Apr	May	June
12/13	642	578	479	671	842	598	465	664	507	683	608	610
13/14	812	828	681	1,100	661	741	581	814	756	990	996	739
14/15	1,292	1,245	771	1,096	1,069	979	715	1,038	789	1,191	1,026	1,039
15/16	1,179	1,247	852	1,343	1,039	1,057	1,049	976	1,157	1,399	1,347	1,133
3 Year Avg (12/13 - 14/15)	915	884	644	956	857	773	587	839	684	955	877	796

## Number of New Lots, by month

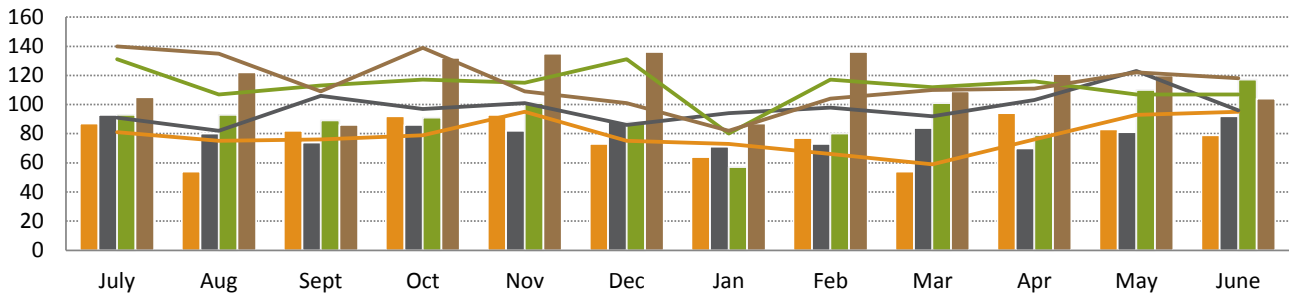
A total of 1,940 new lots were created during June 2016, a 34.37% decrease from the previous month (2,956) and a 16.49% decrease from June 2015 (2,323).



	July	Aug	Sept	Oct	Nov	Dec	Jan	Feb	Mar	Apr	May	June
12/13	1,800	1,693	1,442	2,131	2,052	1,857	1,586	1,859	1,859	2,250	2,189	1,651
13/14	2,230	1,990	2,140	3,204	2,464	1,851	1,618	2,301	2,942	3,955	2,923	1,643
14/15	2,785	3,351	2,574	2,698	2,572	2,760	1,996	2,650	3,276	3,319	3,684	2,323
15/16	3,251	2,881	2,104	3,124	1,890	2,118	2,063	2,319	2,540	3,064	2,956	1,940
3 Year Avg (12/13 - 14/15)	2,272	2,345	2,052	2,678	2,363	2,156	1,733	2,270	2,692	3,175	2,932	1,872

## Strata Plans (SP) and Survey Strata Plans (SSP) lodged, by month

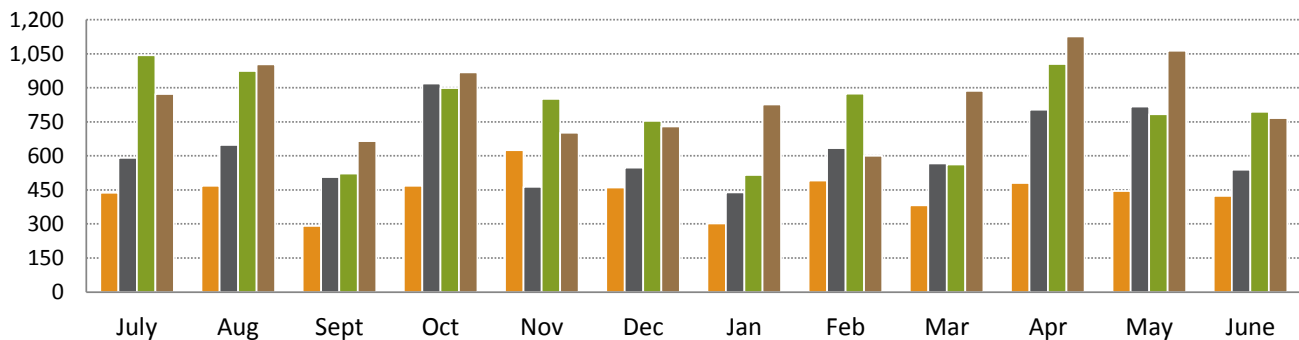
A total of 222 Strata Plans and Survey Strata Plans were lodged in June 2016, an 8.26% decrease from the previous month (242) and a 0.89% decrease from June 2015 (224).



	July	Aug	Sept	Oct	Nov	Dec	Jan	Feb	Mar	Apr	May	June
12/13 SP	87	54	82	92	93	73	64	77	54	94	83	79
12/13 SSP	81	75	76	79	95	75	73	66	59	76	93	95
13/14 SP	93	80	74	86	82	88	71	73	84	70	81	92
13/14 SSP	91	82	106	97	101	86	94	98	92	103	123	96
14/15 SP	93	93	89	91	101	88	57	80	101	79	110	117
14/15 SSP	131	107	113	117	115	131	80	117	112	116	107	107
15/16 SP	105	122	86	132	135	136	87	136	109	121	120	104
15/16 SSP	140	135	109	139	109	101	82	104	110	111	122	118

## Strata Plans (SP) and Survey Strata Plans (SSP) lots created requiring WAPC approval, by month

A total of 766 lots were created requiring WAPC approval in June 2016, a 27.94% decrease from the previous month (1,063) and a 3.65% decrease from June 2015 (795).



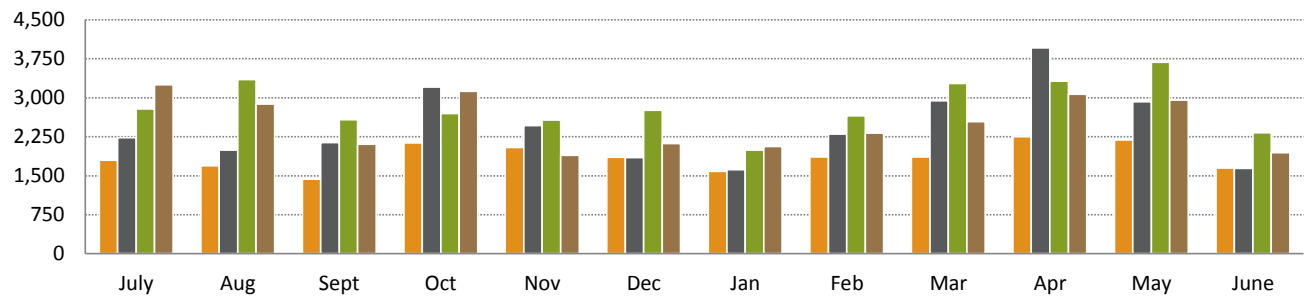
	July	Aug	Sept	Oct	Nov	Dec	Jan	Feb	Mar	Apr	May	June
12/13 WAPC	437	469	292	469	625	461	302	491	382	480	445	423
12/13 WAPC EX	205	109	187	202	217	137	163	173	125	203	163	187
13/14 WAPC	592	649	506	919	463	549	439	635	566	803	817	539
13/14 WAPC EX	220	179	175	181	198	192	142	179	190	187	179	200
14/15 WAPC	1,043	975	522	899	852	755	516	874	562	1,005	783	795
14/15 WAPC EX	249	270	249	197	217	224	199	164	227	186	243	244
15/16 WAPC	873	1,003	665	968	702	729	826	600	886	1,127	1,063	766
15/16 WAPC EX	306	244	187	375	337	328	223	376	271	272	284	367

Note: "Ex" represents Exempt



## Strata Lots (SL) created as a % of all lots created, by month

A total of 1,940 lots were created in June 2016, of which 58.40% (1,133) were strata lots, a decrease from the previous month (1,347) and an increase compared to the same time previous year (1,039).



	July	Aug	Sept	Oct	Nov	Dec	Jan	Feb	Mar	Apr	May	June
12/13 All Lots	1,796	1,690	1,433	2,131	2,045	1,854	1,586	1,859	1,859	2,250	2,189	1,650
12/13 % SL	35.75	34.20	33.43	32.84	41.17	32.25	29.32	35.72	27.27	30.36	27.78	36.95
13/14 All Lots	2,230	1,990	2,140	3,204	2,464	1,851	1,618	2,301	2,942	3,955	2,923	1,643
13/14 % SL	36.41	41.61	31.82	34.33	26.83	40.03	35.91	35.38	25.70	25.03	34.07	44.98
14/15 All Lots	2,785	3,351	2,574	2,698	2,572	2,760	1,996	2,650	3,276	3,319	3,684	2,323
14/15 % SL	46.39	37.15	29.95	40.62	41.56	35.47	35.82	39.17	24.08	35.88	27.85	44.73
15/16 All Lots	3,251	2,881	2,104	3,124	1,890	2,118	2,063	2,319	2,540	3,064	2,956	1,940
15/16 % SL	36.27	55.49	51.29	59.57	54.97	49.91	50.85	42.09	45.55	45.66	45.57	58.40

### Disclaimer

To the extent permitted by law, the Western Australian Land Information Authority trading as Landgate will in no way be liable to you or anyone else for any loss, damage or costs however caused (including through negligence) which may be directly or indirectly suffered arising from the use of or reliance on any information or data (including incomplete, out of date, wrong, inaccurate or misleading information or data) whether expressed or implied in the Report.

The information contained in this Report is provided by Landgate in good faith on an "as is" basis. The information is believed to be accurate and current at the date the Report was created. However changes in circumstances may affect the accuracy and completeness of the information. Landgate makes no representation or warranty as to the reliability, accuracy or completeness, merchantability or fitness for purpose of the information contained in this Report. You should not act on the basis of anything contained in this Report without first obtaining specific professional advice. It is not intended to provide the basis for any evaluation, decision or forecasting. You must make your own assessment of it and rely on it wholly at your own risk. Where there is any concern about accuracy and currency of the information in the Report, reference should be made to Landgate for verification.

To the extent permitted by law, all representations, warranties and other terms are excluded and where they cannot be excluded, any liability suffered arising out of use of the Report is limited to resupply.

### Copyright

You may download and print the Report only for your personal and non-commercial use or use within your organisation for internal purposes, unless you have prior written approval.

Other than for the purposes of and subject to the conditions prescribed under the Copyright Act, you may not, in any form or by any means without Landgate's prior written permission

- adapt, reproduce, store, distribute, transmit, print, display, perform, publish or create derivative works from any part of the Report; or
- commercialise any information, products or services obtained from any part of the Report.

Requests to use copyright material should be addressed to Landgate, PO Box 2222, Midland WA 6036. Telephone +61 (0)8 9273 7373 or email: [customerservice@landgate.wa.gov.au](mailto:customerservice@landgate.wa.gov.au).

Any authorised reproduction however altered, reformatted or redisplayed must acknowledge the source of the information and that Landgate is the owner of copyright.