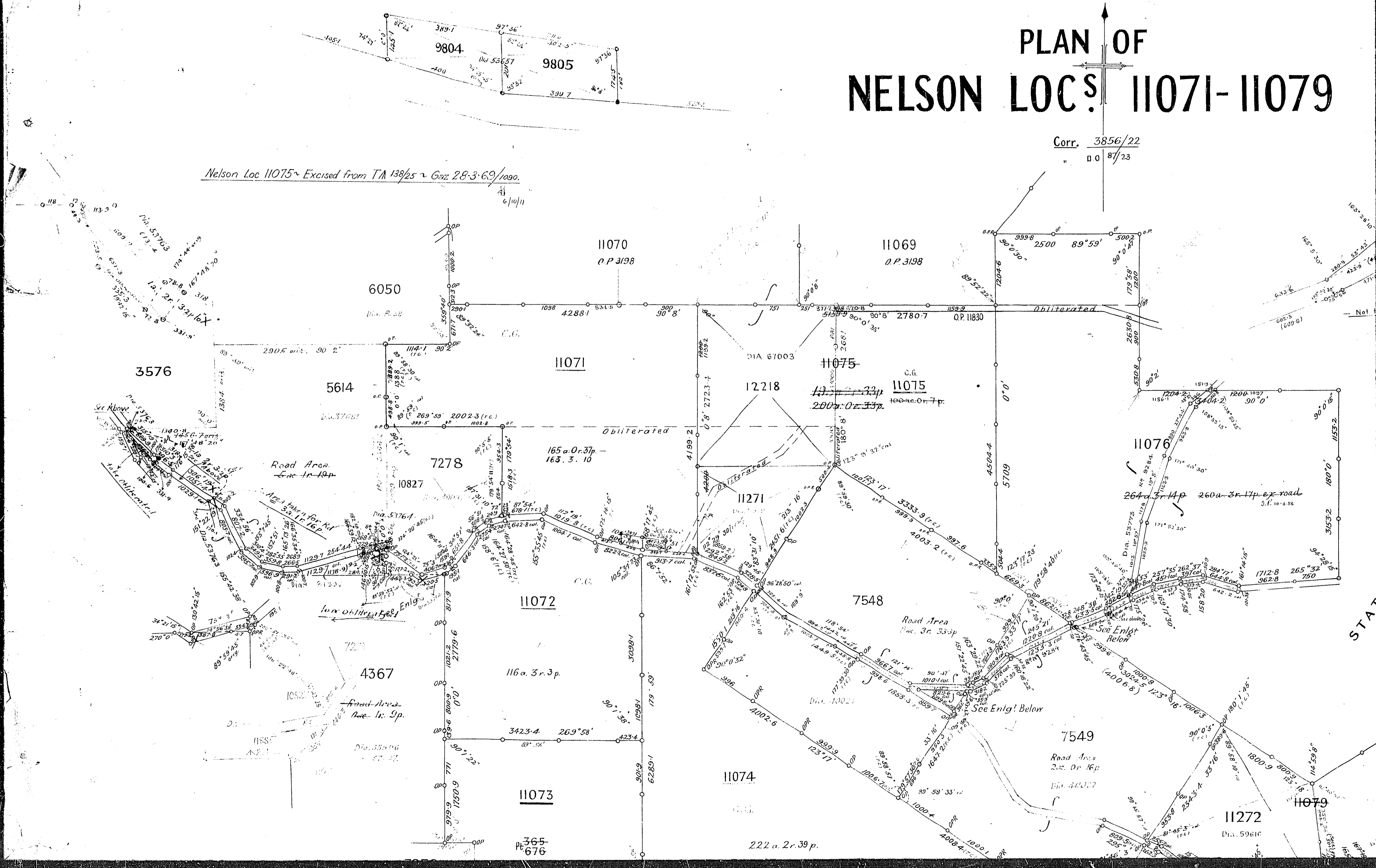


PLAN OF NELSON LOC^s 11071-11079

Corr. 3856/22
" 00 87/23

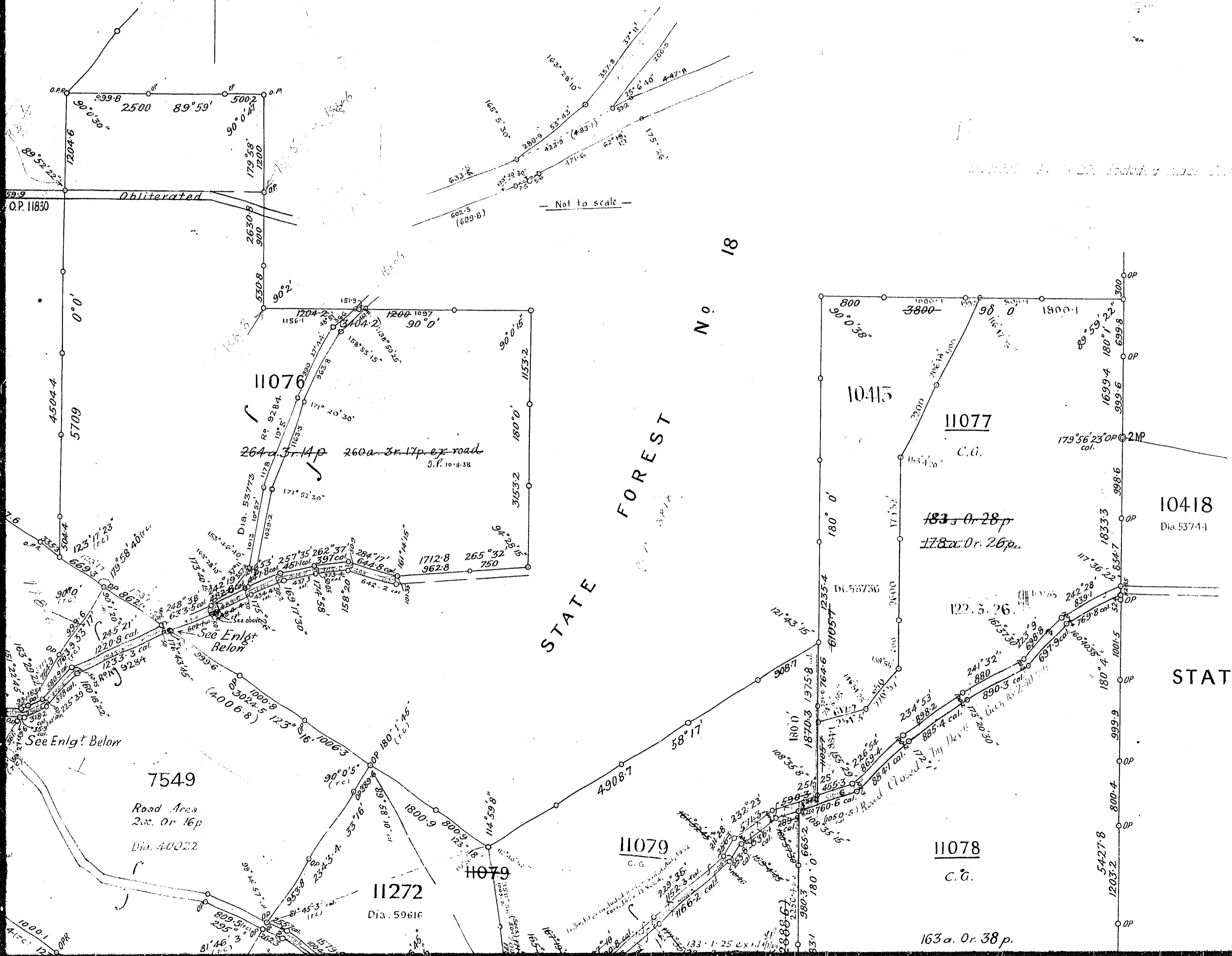
Nelson Loc 11075 ~ Excised from TA 138/25 ~ Gaz 28-3-69/1090.
6/10/11

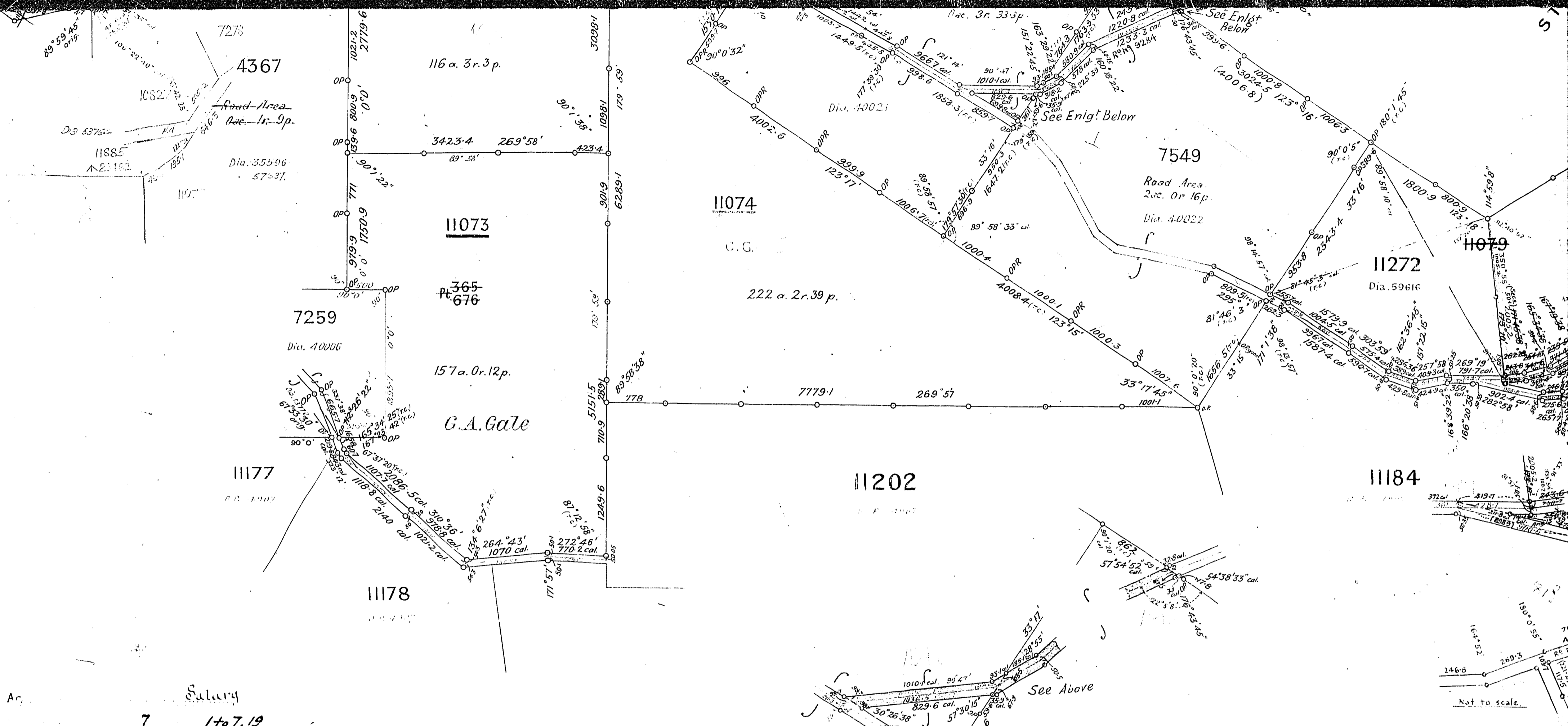


PLAN OF ON LOC. 11071-11079

Corr. 3856/22

11.0 87/23



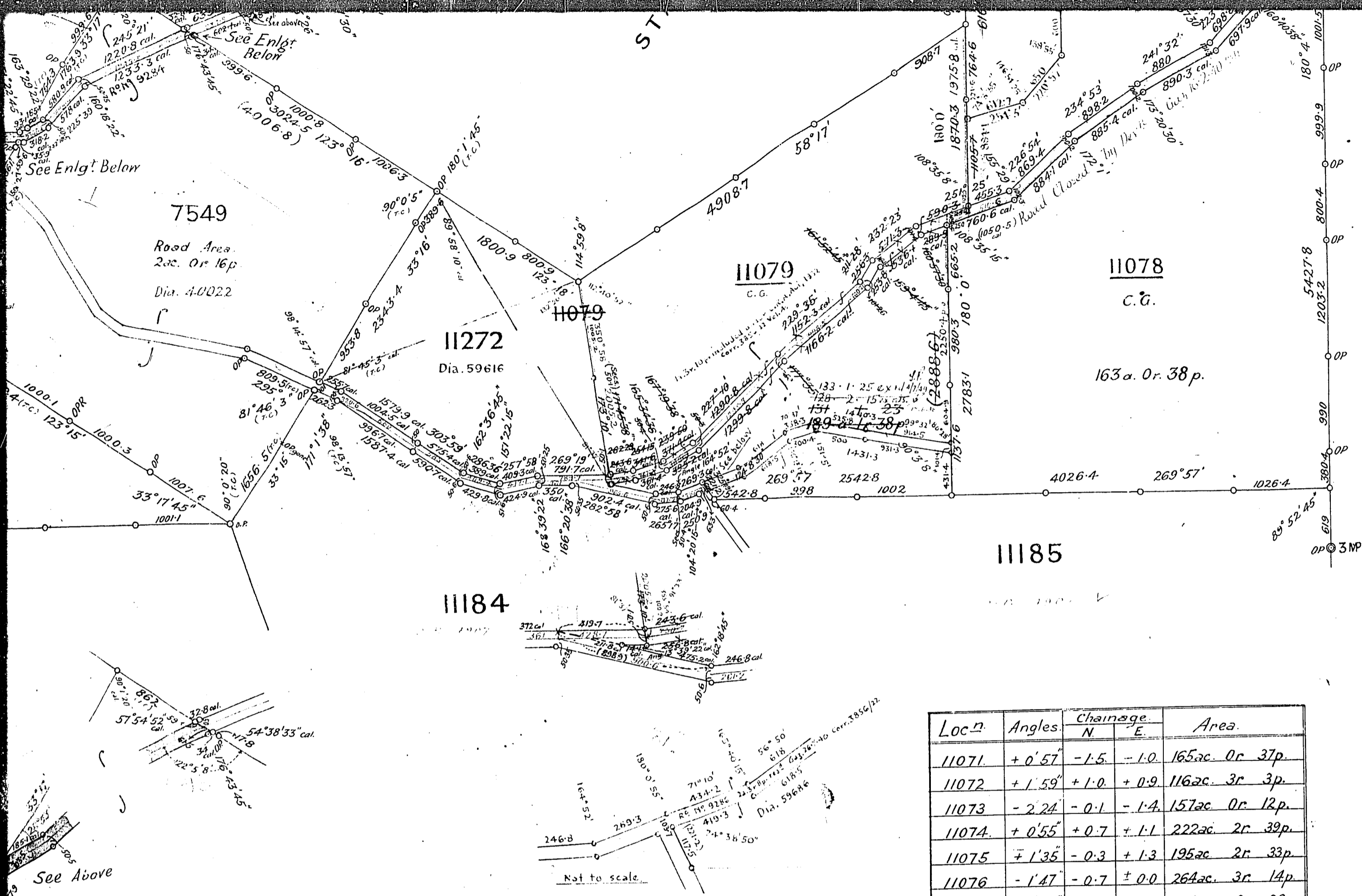


Ar. Salary
 7 1 to 7, 19
 W. Küger 12/6/31.
 W. Küger 12/6/31.

W. Küger 5.326

SURVEYORS OFFICE

Surveyor General
 H. A. Smith
 Licensed Surveyor
 Date 11/8/1926
 Date



STATE FOREST NO 34

Survey approved by (Location 11075 by
 J. J. [Signature] General Date 9-8-1961
 Diag 67003

Loc ⁿ	Angles	Chainage		Area
		N	E	
11071	+ 0° 57'	-1.5	-1.0	165 ac. Or 37p
11072	+ 1° 59'	+1.0	+0.9	116 ac. 3r 3p
11073	- 2° 24'	-0.1	-1.4	157 ac. Or 12p
11074	+ 0° 55'	+0.7	+1.1	222 ac. 2r 39p
11075	+ 1° 35'	-0.3	+1.3	195 ac. 2r 33p
11076	- 1° 47'	-0.7	± 0.0	264 ac. 3r 14p
11077	+ 1° 59'	-0.1	+0.7	183 ac. Or 28p
11078	- 1° 22'	-2.7	+0.8	163 ac. Or 38p
11079	- 0° 16'	-3.0	+0.6	189 ac. 1r 38p
11079 S. E. Pt	+ 0° 51'	-0.3	+1.2	
7548	- 0° 38'	+0.2	± 0.0	
7548 South Pt	- 0° 58'	+0.8	+0.3	
7548 Between Pts	- 0° 37'	-0.1	+0.3	
7549 N. W. Cor	+ 0° 45'	+0.3	-0.2	
7549 South Pt	+ 0° 12'	-0.8	-0.5	
7549	+ 1° 33'	-0.9	-1.4	
7278	+ 0° 3'	+1.2	-0.2	
5614	- 1° 45'	-2.3	+0.5	

SURVEYORS OFFICE

H. A. Smith
 Licensed Surveyor
 Date 11/8/1926

Surveyor General

Date

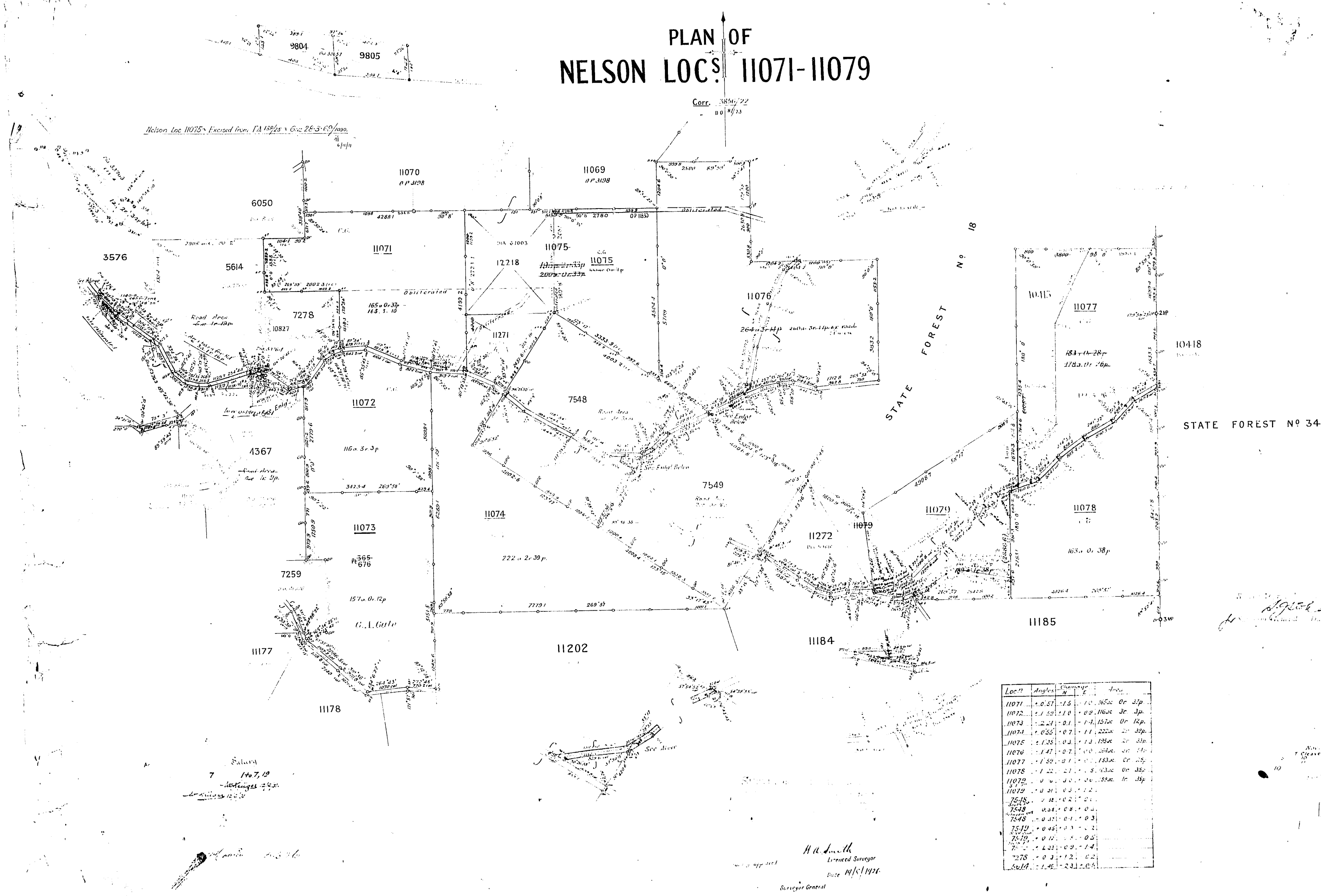
Nov. & Dec. 24
 T. Cleave. FR. 51.55
 10 11
 4.59/40 C2



OP 3199

3199

PLAN OF NELSON LOC. 11071-11079



Lot	Bearing	Distance	Area
11071	110° 21'	11.0	11.0000
11072	111° 20'	11.0	11.0000
11073	112° 19'	11.0	11.0000
11074	113° 18'	11.0	11.0000
11075	114° 17'	11.0	11.0000
11076	115° 16'	11.0	11.0000
11077	116° 15'	11.0	11.0000
11078	117° 14'	11.0	11.0000
11079	118° 13'	11.0	11.0000
11080	119° 12'	11.0	11.0000
11081	120° 11'	11.0	11.0000
11082	121° 10'	11.0	11.0000
11083	122° 9'	11.0	11.0000
11084	123° 8'	11.0	11.0000
11085	124° 7'	11.0	11.0000
11086	125° 6'	11.0	11.0000
11087	126° 5'	11.0	11.0000
11088	127° 4'	11.0	11.0000
11089	128° 3'	11.0	11.0000
11090	129° 2'	11.0	11.0000