



# Business Activity Profile

May 2016

## At a glance

The following table compares current month data with the previous month and the same time previous year.

| Service/Product description                   | Comparison |                  |                   |
|---|------------|------------------|-------------------|
|   | May 2016   | Apr 2016         | May 2015          |
| Total Document Lodgements                     | 27,801     | 25,042<br>11.02% | 30,239<br>8.06%   |
| Transfer Lodgements                           | 6,172      | 5,414<br>14.00%  | 6,940<br>11.07%   |
| Mortgage Lodgements                           | 7,709      | 6,861<br>12.36%  | 8,704<br>11.43%   |
| Searches                                      | 137,730    | 127,037<br>8.42% | 195,083<br>29.40% |
| Electronic Advice of Sale Lodgements          | 5,810      | 5,208<br>11.56%  | 6,565<br>11.50%   |
| Subdivisional Lots Created                    | 1,609      | 1,665<br>3.36%   | 2,658<br>39.47%   |
| Strata Lots Created                           | 1,347      | 1,399<br>3.72%   | 1,026<br>31.29%   |
| New Lots Created                              | 2,956      | 3,064<br>3.52%   | 3,684<br>19.76%   |
| Strata Plan and Survey Strata Plan Lodgements | 242        | 232<br>4.31%     | 217<br>11.52%     |



### Historical shipwreck data now in Locate

History enthusiasts interested in Western Australia's (WA) maritime heritage can now use Locate as an online source of information about the location of shipwrecks off the State's coast.

Locate, part of Western Australia's Shared Location Information Platform (SLIP) which is powered by Landgate, is a website that provides access to a wide range of government location information. This data includes property addresses, aerial photography, satellite imagery and historical maps from many WA agencies.

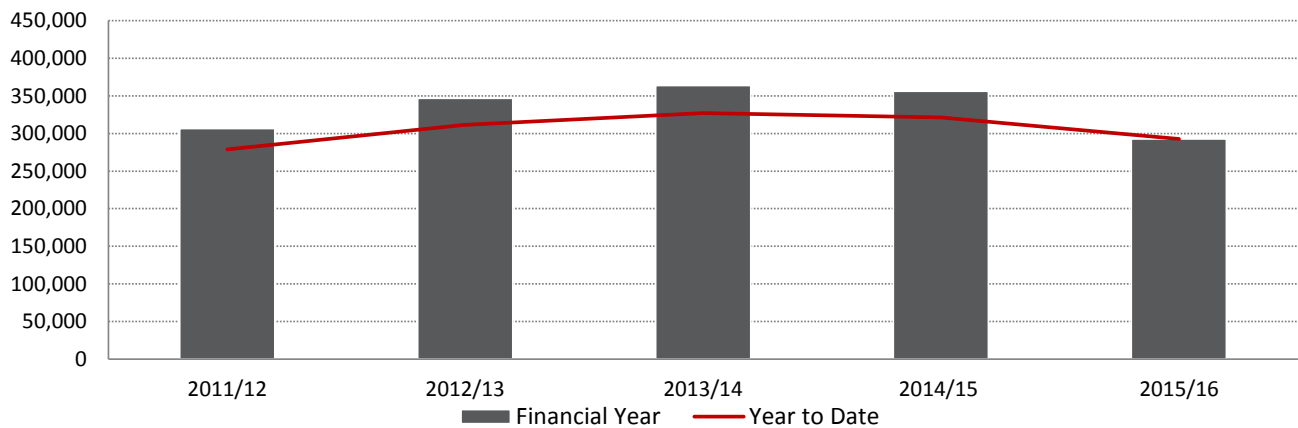
Landgate Chief Executive Mike Bradford said the additional shipwreck and maritime archaeological sites data from the Western Australian Museum is an example of how WA's new Open Data Policy is used to make it easier for all Western Australians to explore their State and its history.

"By visiting Locate people can explore these sites from home, Mr Bradford said. Clicking on these sites reveals an information box that contains details about each area's location as well as interesting historical facts."

To learn more about shipwrecks and maritime archaeological sites as well as other government location data visit [locate.wa.gov.au](http://locate.wa.gov.au).

## Total Document Lodgements, by financial year

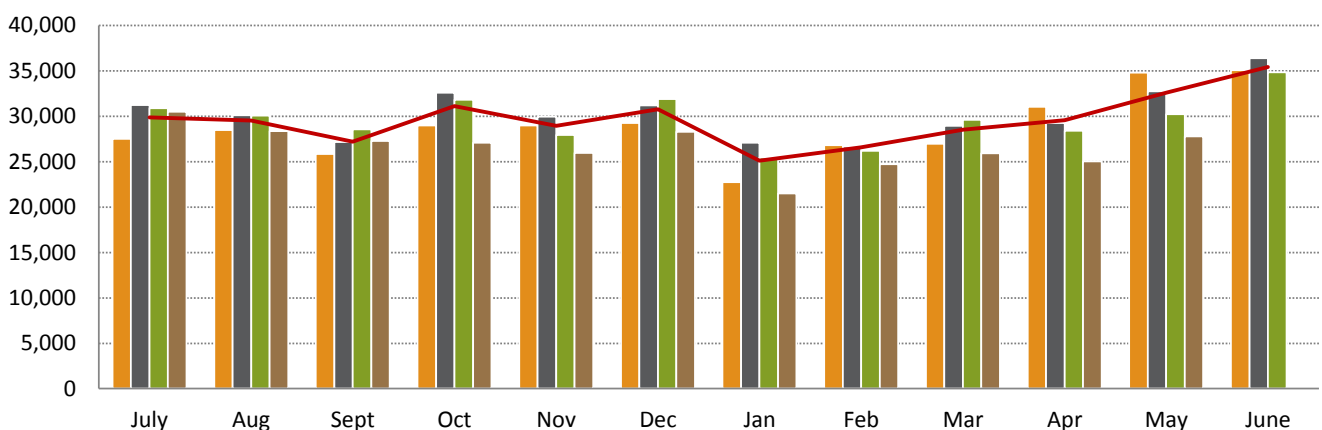
Total document lodgements 2015/16 year to date (292,540) reflect an 8.91% decrease when compared to the same time 2014/15 (321,158).



| Financial Year                | 11/12   | 12/13   | 13/14   | 14/15   | 15/16 YTD |
|-------------------------------|---------|---------|---------|---------|-----------|
| Total Lodgements July to June | 306,558 | 346,610 | 363,477 | 356,010 |           |
| Total Lodgements Year to Date | 278,858 | 311,539 | 327,054 | 321,158 | 292,540   |

## Total Document Lodgements, by month

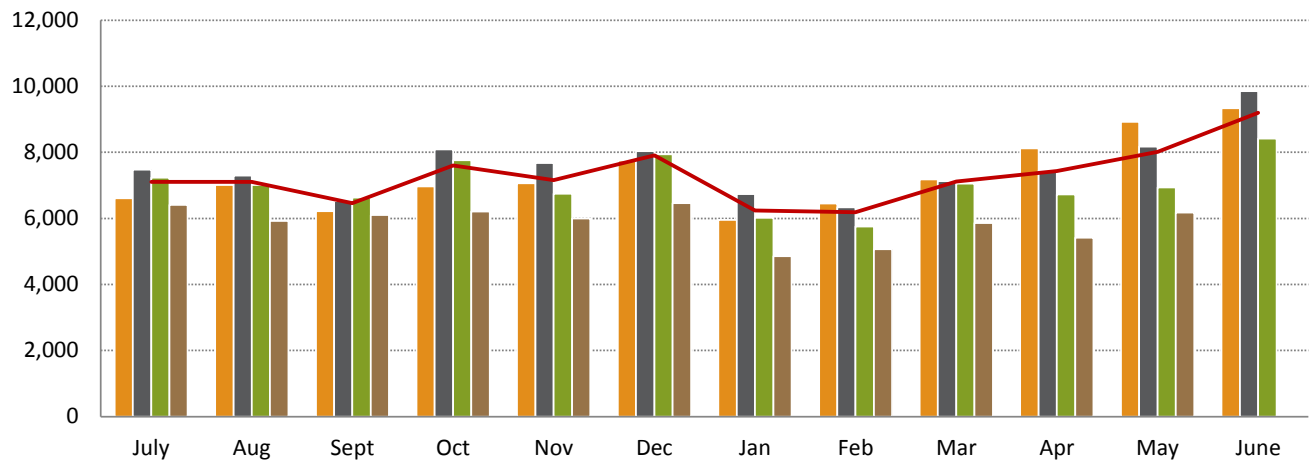
The number of documents lodged in May 2016 (27,801) increased 11.02% from the previous month (25,042) and decreased 8.06% from May 2015 (30,239).



|                            | July   | Aug    | Sept   | Oct    | Nov    | Dec    | Jan    | Feb    | Mar    | Apr    | May    | June   |
|----------------------------|--------|--------|--------|--------|--------|--------|--------|--------|--------|--------|--------|--------|
| 12/13                      | 27,515 | 28,481 | 25,847 | 29,007 | 29,006 | 29,264 | 22,732 | 26,834 | 26,984 | 31,041 | 34,828 | 35,071 |
| 13/14                      | 31,263 | 30,118 | 27,174 | 32,606 | 29,965 | 31,201 | 27,093 | 26,669 | 28,956 | 29,261 | 32,748 | 36,423 |
| 14/15                      | 30,898 | 30,068 | 28,560 | 31,816 | 27,949 | 31,898 | 25,483 | 26,213 | 29,617 | 28,417 | 30,239 | 34,852 |
| 15/16                      | 30,525 | 28,376 | 27,270 | 27,105 | 25,982 | 28,291 | 21,495 | 24,723 | 25,930 | 25,042 | 27,801 |        |
| 3 Year Avg (12/13 - 14/15) | 29,892 | 29,556 | 27,194 | 31,143 | 28,973 | 30,788 | 25,103 | 26,572 | 28,519 | 29,573 | 32,605 | 35,449 |

## Transfer Lodgements, by month

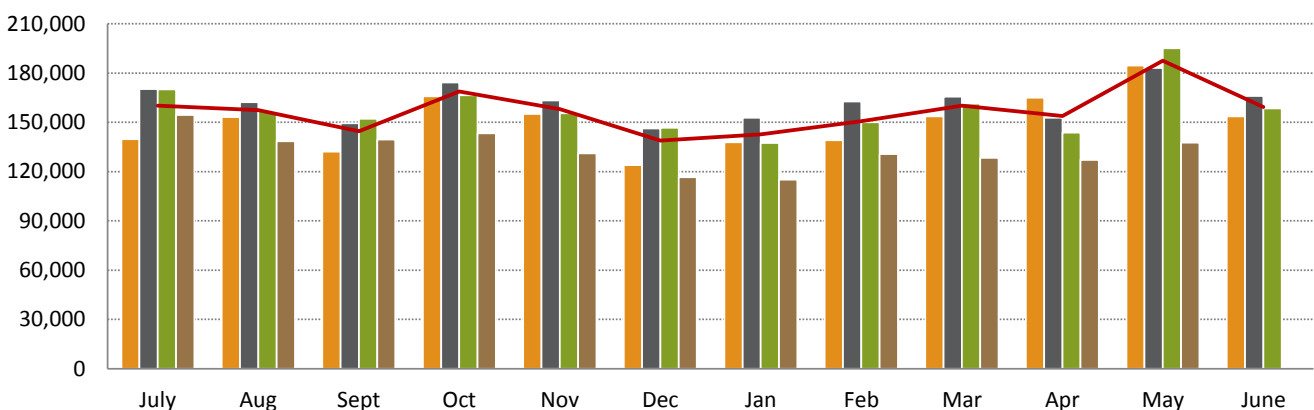
Transfer documents lodged in May 2016 (6,172) increased 14.00% from the previous month (5,414) and decreased 11.07% from May 2015 (6,940). The number of mortgages lodged during May 2016 (7,709) increased 12.36% from the previous month (6,861) and decreased 11.43% from May 2015 (8,704).



|                               | July  | Aug   | Sept  | Oct   | Nov   | Dec   | Jan   | Feb   | Mar   | Apr   | May   | June  |
|-------------------------------|-------|-------|-------|-------|-------|-------|-------|-------|-------|-------|-------|-------|
| 12/13                         | 6,606 | 7,007 | 6,217 | 6,969 | 7,068 | 7,756 | 5,952 | 6,452 | 7,181 | 8,116 | 8,923 | 9,337 |
| 13/14                         | 7,475 | 7,294 | 6,530 | 8,085 | 7,672 | 8,036 | 6,741 | 6,335 | 7,131 | 7,449 | 8,175 | 9,851 |
| 14/15                         | 7,228 | 7,016 | 6,626 | 7,759 | 6,742 | 7,938 | 6,018 | 5,759 | 7,053 | 6,730 | 6,940 | 8,413 |
| 15/16                         | 6,414 | 5,927 | 6,106 | 6,204 | 5,993 | 6,460 | 4,853 | 5,064 | 5,861 | 5,414 | 6,172 |       |
| 3 Year Avg<br>(12/13 - 14/15) | 7,103 | 7,106 | 6,458 | 7,604 | 7,161 | 7,910 | 6,237 | 6,182 | 7,122 | 7,432 | 8,013 | 9,200 |

## Search Activities, by month

The number of searches for May 2016 (137,730) increased 8.42% from the previous month (127,037) and decreased 29.40% from May 2015 (195,083).

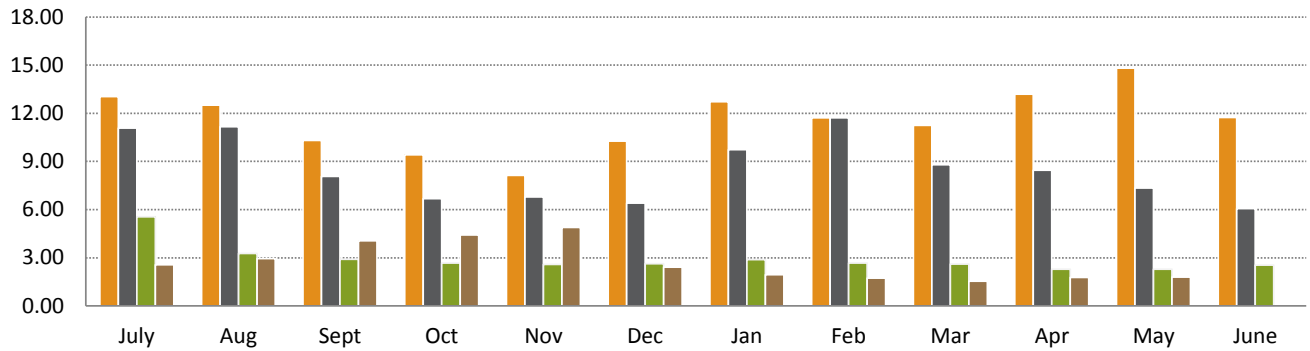


|                               | July    | Aug     | Sept    | Oct     | Nov     | Dec     | Jan     | Feb     | Mar     | Apr     | May     | June    |
|-------------------------------|---------|---------|---------|---------|---------|---------|---------|---------|---------|---------|---------|---------|
| 12/13                         | 139,829 | 153,219 | 132,088 | 165,964 | 155,039 | 124,079 | 137,875 | 139,189 | 153,605 | 165,040 | 184,617 | 153,749 |
| 13/14                         | 170,374 | 162,359 | 149,405 | 174,207 | 163,439 | 146,356 | 152,792 | 162,818 | 165,751 | 152,837 | 183,237 | 166,079 |
| 14/15                         | 170,172 | 156,893 | 152,229 | 166,408 | 155,655 | 146,637 | 137,368 | 150,146 | 161,484 | 143,831 | 195,083 | 158,516 |
| 15/16                         | 154,413 | 138,603 | 139,497 | 143,355 | 131,093 | 116,599 | 115,180 | 130,809 | 128,384 | 127,037 | 137,730 |         |
| 3 Year Avg<br>(12/13 - 14/15) | 160,125 | 157,490 | 144,574 | 168,860 | 158,044 | 139,024 | 142,678 | 150,718 | 160,280 | 153,903 | 187,646 | 159,448 |

## Time to register a transaction against a Certificate of Title, by month

Target: 75% of documents within 5.2 days

During May 2016 the average number of days to register a transaction against a Certificate of Title was 1.80 days, a marginal increase compared to the previous month (1.78 days).

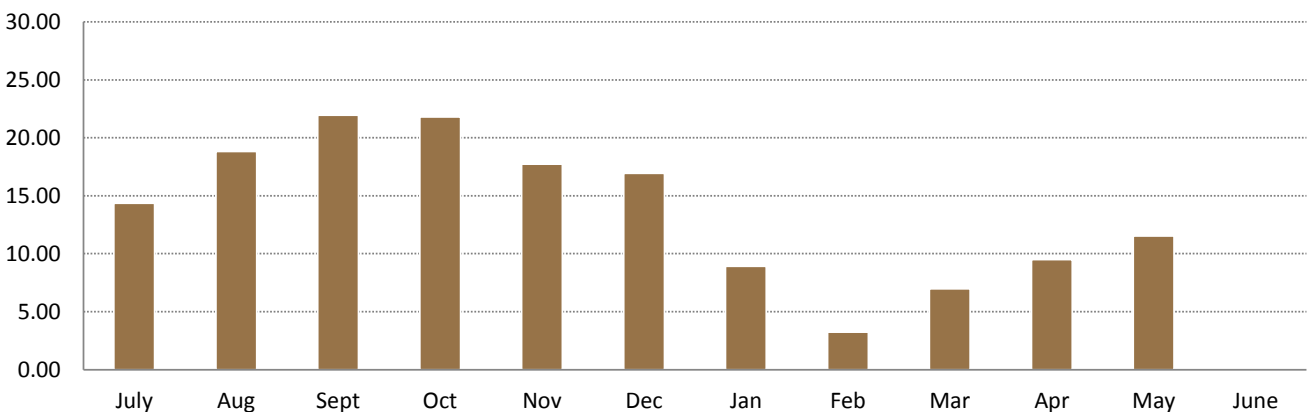


|       | July  | Aug   | Sept  | Oct  | Nov  | Dec   | Jan   | Feb   | Mar   | Apr   | May   | June  |
|-------|-------|-------|-------|------|------|-------|-------|-------|-------|-------|-------|-------|
| 12/13 | 13.05 | 12.50 | 10.31 | 9.42 | 8.13 | 10.26 | 12.72 | 11.72 | 11.25 | 13.20 | 14.82 | 11.74 |
| 13/14 | 11.08 | 11.16 | 8.08  | 6.68 | 6.79 | 6.41  | 9.73  | 11.73 | 8.80  | 8.45  | 7.35  | 6.07  |
| 14/15 | 5.56  | 3.26  | 2.90  | 2.68 | 2.59 | 2.62  | 2.88  | 2.66  | 2.61  | 2.28  | 2.29  | 2.55  |
| 15/16 | 2.57  | 2.95  | 4.06  | 4.41 | 4.90 | 2.41  | 1.95  | 1.74  | 1.53  | 1.78  | 1.80  |       |

## Time to register a Certificate of Title for a large subdivision, by month

Target: 10 days

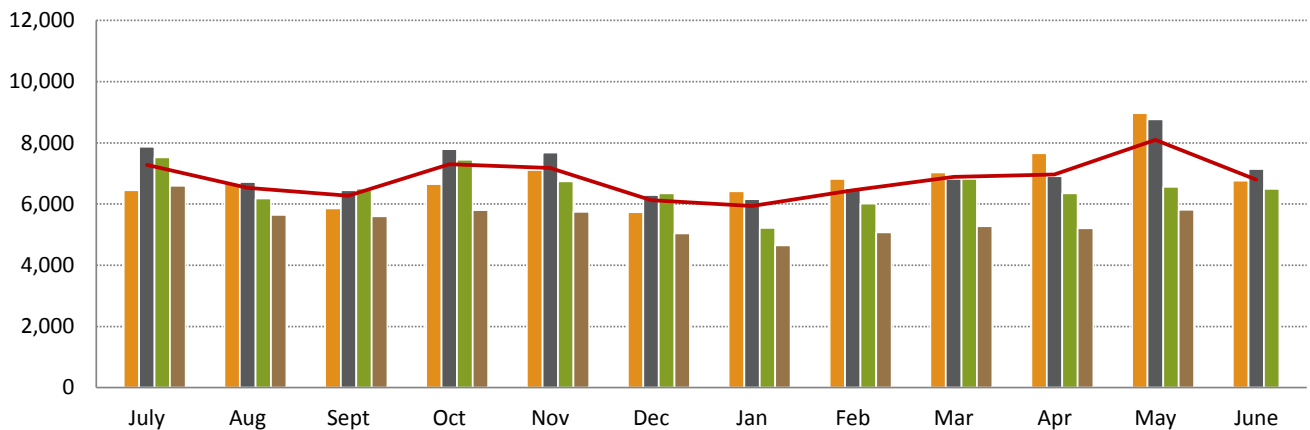
During May 2016 the average number of days to register a Certificate of Title for subdivisions was 11.52 days, an increase compared to the previous month (9.50 days).



|       | July  | Aug   | Sept  | Oct   | Nov   | Dec   | Jan  | Feb  | Mar  | Apr  | May   | June |
|-------|-------|-------|-------|-------|-------|-------|------|------|------|------|-------|------|
| 15/16 | 14.36 | 18.84 | 21.95 | 21.80 | 17.72 | 16.95 | 8.91 | 3.25 | 6.98 | 9.50 | 11.52 |      |

## Electronic Advice of Sale (EAS) lodgements, by month

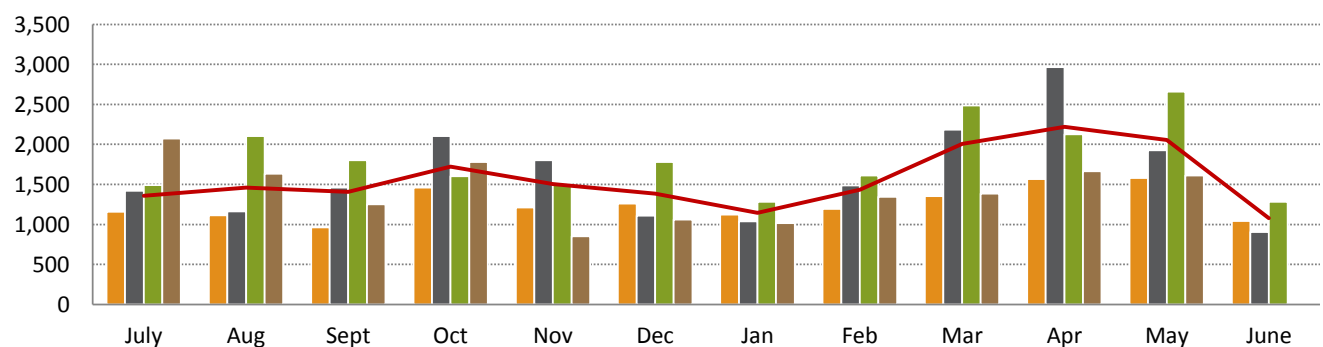
A total of 5,810 lodgements were registered during May 2016, an 11.56% increase from the previous month (5,208) and an 11.50% decrease from May 2015 (6,565).



|                               | July  | Aug   | Sept  | Oct   | Nov   | Dec   | Jan   | Feb   | Mar   | Apr   | May   | June  |
|-------------------------------|-------|-------|-------|-------|-------|-------|-------|-------|-------|-------|-------|-------|
| 12/13                         | 6,446 | 6,675 | 5,853 | 6,657 | 7,109 | 5,731 | 6,418 | 6,818 | 7,030 | 7,663 | 8,975 | 6,763 |
| 13/14                         | 7,877 | 6,720 | 6,448 | 7,797 | 7,678 | 6,296 | 6,165 | 6,522 | 6,817 | 6,905 | 8,767 | 7,149 |
| 14/15                         | 7,524 | 6,184 | 6,507 | 7,443 | 6,743 | 6,345 | 5,220 | 6,015 | 6,821 | 6,345 | 6,565 | 6,491 |
| 15/16                         | 6,599 | 5,643 | 5,602 | 5,799 | 5,743 | 5,045 | 4,649 | 5,078 | 5,274 | 5,208 | 5,810 |       |
| 3 Year Avg<br>(12/13 - 14/15) | 7,282 | 6,526 | 6,269 | 7,299 | 7,177 | 6,124 | 5,934 | 6,452 | 6,889 | 6,971 | 8,102 | 6,801 |

## Number of subdivisional lots, by month

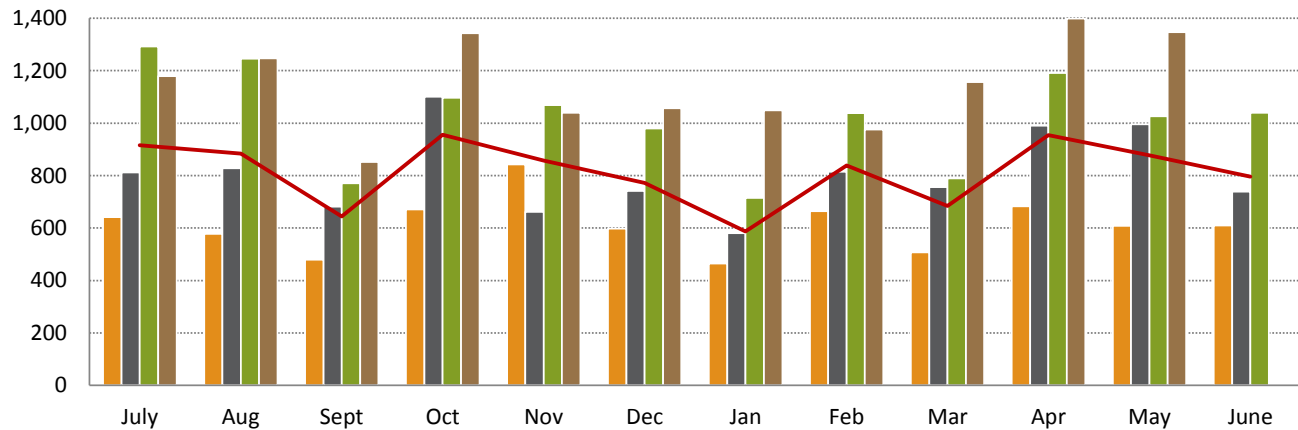
During May 2016, 1,609 sub-divisional lots were created, a 3.36% decrease from the previous month (1,665) and a 39.47% decrease from May 2015 (2,658).



|                               | July  | Aug   | Sept  | Oct   | Nov   | Dec   | Jan   | Feb   | Mar   | Apr   | May   | June  |
|-------------------------------|-------|-------|-------|-------|-------|-------|-------|-------|-------|-------|-------|-------|
| 12/13                         | 1,158 | 1,115 | 963   | 1,460 | 1,210 | 1,259 | 1,121 | 1,195 | 1,352 | 1,567 | 1,581 | 1,041 |
| 13/14                         | 1,418 | 1,162 | 1,459 | 2,104 | 1,803 | 1,110 | 1,037 | 1,487 | 2,186 | 2,965 | 1,927 | 904   |
| 14/15                         | 1,493 | 2,106 | 1,803 | 1,602 | 1,503 | 1,781 | 1,281 | 1,612 | 2,487 | 2,128 | 2,658 | 1,284 |
| 15/16                         | 2,072 | 1,634 | 1,252 | 1,781 | 851   | 1,061 | 1,014 | 1,343 | 1,383 | 1,665 | 1,609 |       |
| 3 Year Avg<br>(12/13 - 14/15) | 1,356 | 1,462 | 1,408 | 1,722 | 1,505 | 1,383 | 1,146 | 1,431 | 2,008 | 2,220 | 2,055 | 1,076 |

## Number of Strata Title Lots, by month

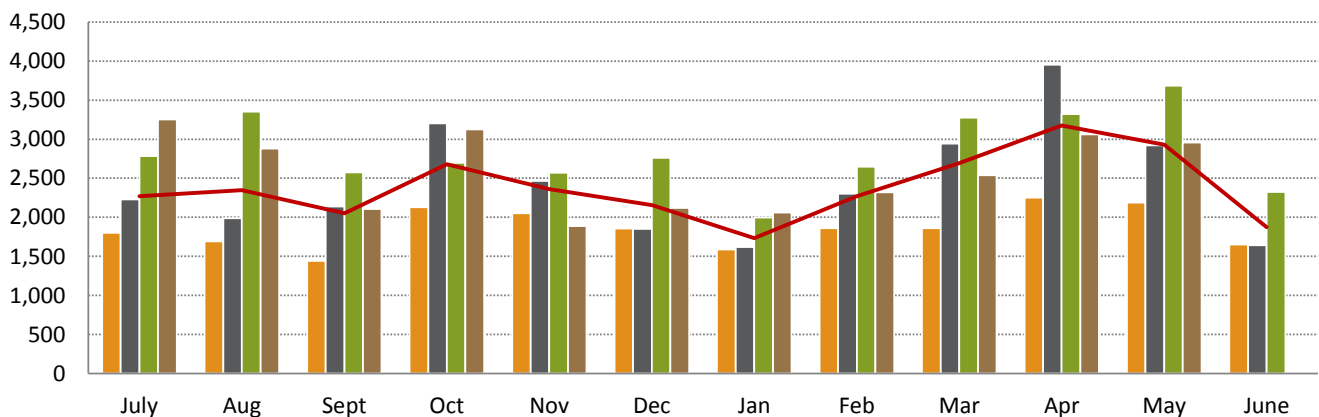
During May 2016, 242 strata plans were lodged creating 1,347 strata lots, a 3.72% decrease from the previous month (1,399) and a 31.29% increase from May 2015 (1,026).



|                               | July  | Aug   | Sept | Oct   | Nov   | Dec   | Jan   | Feb   | Mar   | Apr   | May   | June  |
|-------------------------------|-------|-------|------|-------|-------|-------|-------|-------|-------|-------|-------|-------|
| 12/13                         | 642   | 578   | 479  | 671   | 842   | 598   | 465   | 664   | 507   | 683   | 608   | 610   |
| 13/14                         | 812   | 828   | 681  | 1,100 | 661   | 741   | 581   | 814   | 756   | 990   | 996   | 739   |
| 14/15                         | 1,292 | 1,245 | 771  | 1,096 | 1,069 | 979   | 715   | 1,038 | 789   | 1,191 | 1,026 | 1,039 |
| 15/16                         | 1,179 | 1,247 | 852  | 1,343 | 1,039 | 1,057 | 1,049 | 976   | 1,157 | 1,399 | 1,347 |       |
| 3 Year Avg<br>(12/13 - 14/15) | 915   | 884   | 644  | 956   | 857   | 773   | 587   | 839   | 684   | 955   | 877   | 796   |

## Number of New Lots, by month

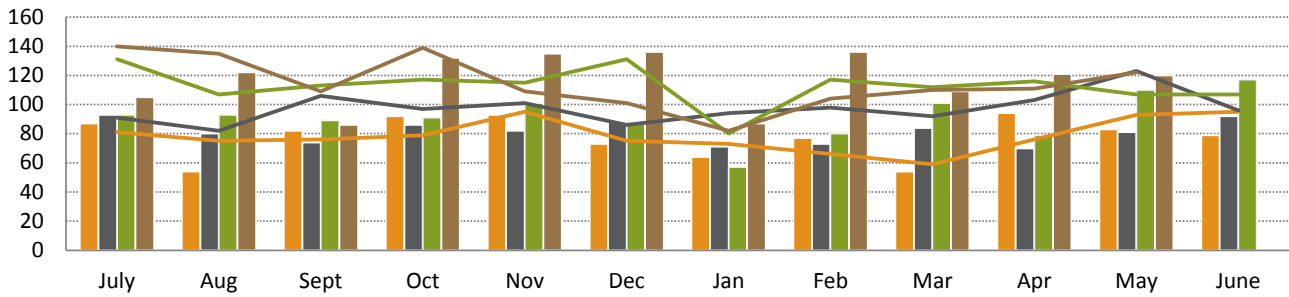
A total of 2,956 new lots were created during May 2016, a 3.52% decrease from the previous month (3,064) and a 19.76% decrease from May 2015 (3,684).



|                               | July  | Aug   | Sept  | Oct   | Nov   | Dec   | Jan   | Feb   | Mar   | Apr   | May   | June  |
|-------------------------------|-------|-------|-------|-------|-------|-------|-------|-------|-------|-------|-------|-------|
| 12/13                         | 1,800 | 1,693 | 1,442 | 2,131 | 2,052 | 1,857 | 1,586 | 1,859 | 1,859 | 2,250 | 2,189 | 1,651 |
| 13/14                         | 2,230 | 1,990 | 2,140 | 3,204 | 2,464 | 1,851 | 1,618 | 2,301 | 2,942 | 3,955 | 2,923 | 1,643 |
| 14/15                         | 2,785 | 3,351 | 2,574 | 2,698 | 2,572 | 2,760 | 1,996 | 2,650 | 3,276 | 3,319 | 3,684 | 2,323 |
| 15/16                         | 3,251 | 2,881 | 2,104 | 3,124 | 1,890 | 2,118 | 2,063 | 2,319 | 2,540 | 3,064 | 2,956 |       |
| 3 Year Avg<br>(12/13 - 14/15) | 2,272 | 2,345 | 2,052 | 2,678 | 2,363 | 2,156 | 1,733 | 2,270 | 2,692 | 3,175 | 2,932 | 1,872 |

### Strata Plans (SP) and Survey Strata Plans (SSP) lodged, by month

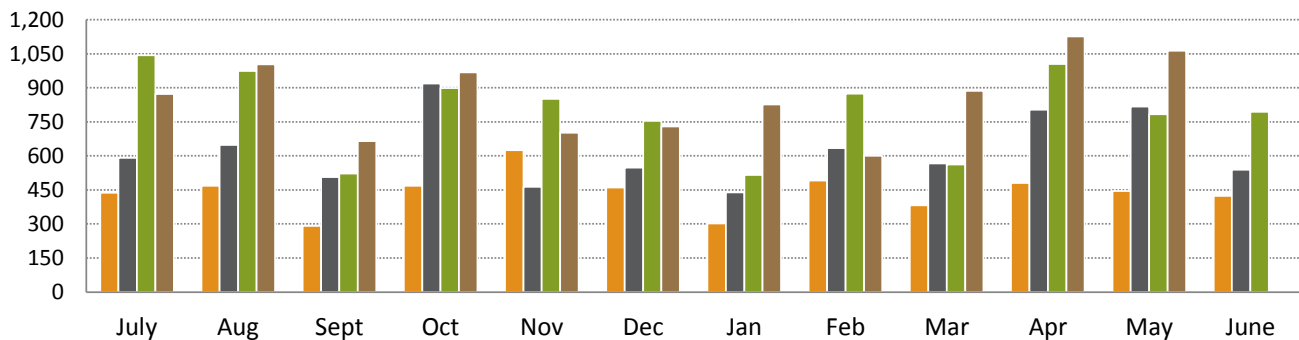
A total of 242 Strata Plans and Survey Strata Plans were lodged in May 2016, a 4.31% increase from the previous month (232) and an 11.52% increase from May 2015 (217).



|           | July | Aug | Sept | Oct | Nov | Dec | Jan | Feb | Mar | Apr | May | June |
|-----------|------|-----|------|-----|-----|-----|-----|-----|-----|-----|-----|------|
| 12/13 SP  | 87   | 54  | 82   | 92  | 93  | 73  | 64  | 77  | 54  | 94  | 83  | 79   |
| 12/13 SSP | 81   | 75  | 76   | 79  | 95  | 75  | 73  | 66  | 59  | 76  | 93  | 95   |
| 13/14 SP  | 93   | 80  | 74   | 86  | 82  | 88  | 71  | 73  | 84  | 70  | 81  | 92   |
| 13/14 SSP | 91   | 82  | 106  | 97  | 101 | 86  | 94  | 98  | 92  | 103 | 123 | 96   |
| 14/15 SP  | 93   | 93  | 89   | 91  | 101 | 88  | 57  | 80  | 101 | 79  | 110 | 117  |
| 14/15 SSP | 131  | 107 | 113  | 117 | 115 | 131 | 80  | 117 | 112 | 116 | 107 | 107  |
| 15/16 SP  | 105  | 122 | 86   | 132 | 135 | 136 | 87  | 136 | 109 | 121 | 120 |      |
| 15/16 SSP | 140  | 135 | 109  | 139 | 109 | 101 | 82  | 104 | 110 | 111 | 122 |      |

### Strata Plans (SP) and Survey Strata Plans (SSP) lots created requiring WAPC approval, by month

A total of 1,063 lots were created requiring WAPC approval in May 2016, a 5.68% decrease from the previous month (1,127) and a 35.76% increase from May 2015 (783).



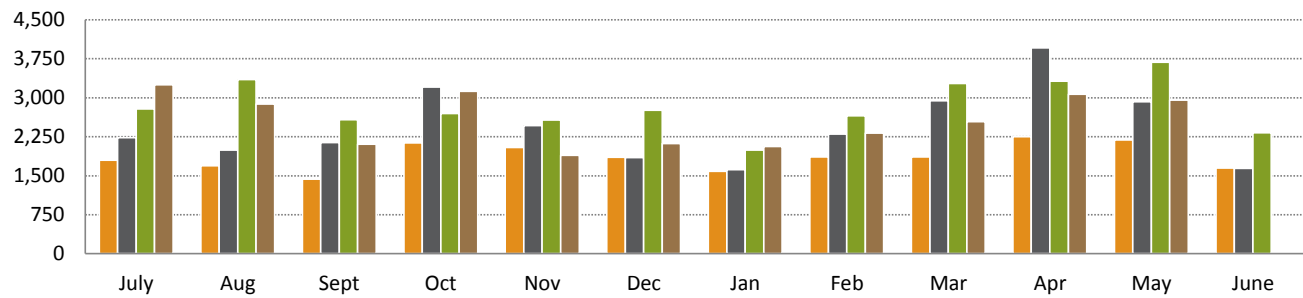
|               | July  | Aug   | Sept | Oct | Nov | Dec | Jan | Feb | Mar | Apr   | May   | June |
|---------------|-------|-------|------|-----|-----|-----|-----|-----|-----|-------|-------|------|
| 12/13 WAPC    | 437   | 469   | 292  | 469 | 625 | 461 | 302 | 491 | 382 | 480   | 445   | 423  |
| 12/13 WAPC EX | 205   | 109   | 187  | 202 | 217 | 137 | 163 | 173 | 125 | 203   | 163   | 187  |
| 13/14 WAPC    | 592   | 649   | 506  | 919 | 463 | 549 | 439 | 635 | 566 | 803   | 817   | 539  |
| 13/14 WAPC EX | 220   | 179   | 175  | 181 | 198 | 192 | 142 | 179 | 190 | 187   | 179   | 200  |
| 14/15 WAPC    | 1,043 | 975   | 522  | 899 | 852 | 755 | 516 | 874 | 562 | 1,005 | 783   | 795  |
| 14/15 WAPC EX | 249   | 270   | 249  | 197 | 217 | 224 | 199 | 164 | 227 | 186   | 243   | 244  |
| 15/16 WAPC    | 873   | 1,003 | 665  | 968 | 702 | 729 | 826 | 600 | 886 | 1,127 | 1,063 |      |
| 15/16 WAPC EX | 306   | 244   | 187  | 375 | 337 | 328 | 223 | 376 | 271 | 272   | 284   |      |

Note: "Ex" represents Exempt



## Strata Lots (SL) created as a % of all lots created, by month

A total of 2,956 lots were created in May 2016, of which 45.57% (1,347) were strata lots, a decrease from the previous month (1,399) and an increase compared to the same time previous year (1,026).



|                | July  | Aug   | Sept  | Oct   | Nov   | Dec   | Jan   | Feb   | Mar   | Apr   | May   | June  |
|----------------|-------|-------|-------|-------|-------|-------|-------|-------|-------|-------|-------|-------|
| 12/13 All Lots | 1,796 | 1,690 | 1,433 | 2,131 | 2,045 | 1,854 | 1,586 | 1,859 | 1,859 | 2,250 | 2,189 | 1,650 |
| 12/13 % SL     | 35.75 | 34.20 | 33.43 | 32.84 | 41.17 | 32.25 | 29.32 | 35.72 | 27.27 | 30.36 | 27.78 | 36.95 |
| 13/14 All Lots | 2,230 | 1,990 | 2,140 | 3,204 | 2,464 | 1,851 | 1,618 | 2,301 | 2,942 | 3,955 | 2,923 | 1,643 |
| 13/14 % SL     | 36.41 | 41.61 | 31.82 | 34.33 | 26.83 | 40.03 | 35.91 | 35.38 | 25.70 | 25.03 | 34.07 | 44.98 |
| 14/15 All Lots | 2,785 | 3,351 | 2,574 | 2,698 | 2,572 | 2,760 | 1,996 | 2,650 | 3,276 | 3,319 | 3,684 | 2,323 |
| 14/15 % SL     | 46.39 | 37.15 | 29.95 | 40.62 | 41.56 | 35.47 | 35.82 | 39.17 | 24.08 | 35.88 | 27.85 | 44.73 |
| 15/16 All Lots | 3,251 | 2,881 | 2,104 | 3,124 | 1,890 | 2,118 | 2,063 | 2,319 | 2,540 | 3,064 | 2,956 |       |
| 15/16 % SL     | 36.27 | 55.49 | 51.29 | 59.57 | 54.97 | 49.91 | 50.85 | 42.09 | 45.55 | 45.66 | 45.57 |       |

### Disclaimer

To the extent permitted by law, the Western Australian Land Information Authority trading as Landgate will in no way be liable to you or anyone else for any loss, damage or costs however caused (including through negligence) which may be directly or indirectly suffered arising from the use of or reliance on any information or data (including incomplete, out of date, wrong, inaccurate or misleading information or data) whether expressed or implied in the Report.

The information contained in this Report is provided by Landgate in good faith on an "as is" basis. The information is believed to be accurate and current at the date the Report was created. However changes in circumstances may affect the accuracy and completeness of the information. Landgate makes no representation or warranty as to the reliability, accuracy or completeness, merchantability or fitness for purpose of the information contained in this Report. You should not act on the basis of anything contained in this Report without first obtaining specific professional advice. It is not intended to provide the basis for any evaluation, decision or forecasting. You must make your own assessment of it and rely on it wholly at your own risk. Where there is any concern about accuracy and currency of the information in the Report, reference should be made to Landgate for verification.

To the extent permitted by law, all representations, warranties and other terms are excluded and where they cannot be excluded, any liability suffered arising out of use of the Report is limited to resupply.

### Copyright

You may download and print the Report only for your personal and non-commercial use or use within your organisation for internal purposes, unless you have prior written approval.

Other than for the purposes of and subject to the conditions prescribed under the Copyright Act, you may not, in any form or by any means without Landgate's prior written permission

- adapt, reproduce, store, distribute, transmit, print, display, perform, publish or create derivative works from any part of the Report; or
- commercialise any information, products or services obtained from any part of the Report.

Requests to use copyright material should be addressed to Landgate, PO Box 2222, Midland WA 6036. Telephone +61 (0)8 9273 7373 or email: [customerservice@landgate.wa.gov.au](mailto:customerservice@landgate.wa.gov.au).

Any authorised reproduction however altered, reformatted or redisplayed must acknowledge the source of the information and that Landgate is the owner of copyright.