

# NOTICE TO SURVEYORS T5/2002

## NEW CSD REQUIREMENTS

Regulation 3(1) of the Transfer of Land (Surveys) Regulations 1995 states “Every plan shall be accompanied by a digital electronic record of that plan in a format specified by the Inspector of Plans and Surveys.” The following are new requirements that are to be implemented immediately.

### EASEMENT POLYGONS

To assist in depicting easements and other spatial interests within DOLA’s spatial systems, surveyors are requested to use the following procedures when capturing easement polygons in CSD files.

All Easement and portion only Covenant and Notification polygons within cadastral lots depicted on a new deposited plan are to be captured in a CSD file using the polygon type “Easement”.

Easement points (eg. points 7 to 14 inclusive on sketch 1 below) must now be intersected on cadastral boundaries when capturing the surround and lots (eg. lots 500 & 501 on sketch 1).

The easement points for any **new easement** must have attributes of *SURVEYED* and have “Point Codes” (ie. “pnthormethod” attribute) “T”, Traverse Adjustment, in the point records.

The easement points for any **old easement** being brought forward onto a new deposited plan must have attributes of *NOT SURVEYED* (unless it was lodged with DOLA previously as a surveyed point on a survey plan or in a CSD file, in which case it would remain as *SURVEYED*) and have “Point Codes” (ie. “pnthormethod” attribute) “T”, Traverse Adjustment, in the point records.

The lines of all easement polygons (old or new) are to have attributes of *SURVEYED* and have “Line Codes” (ie. “distderiv” attribute) “M”, Measured.

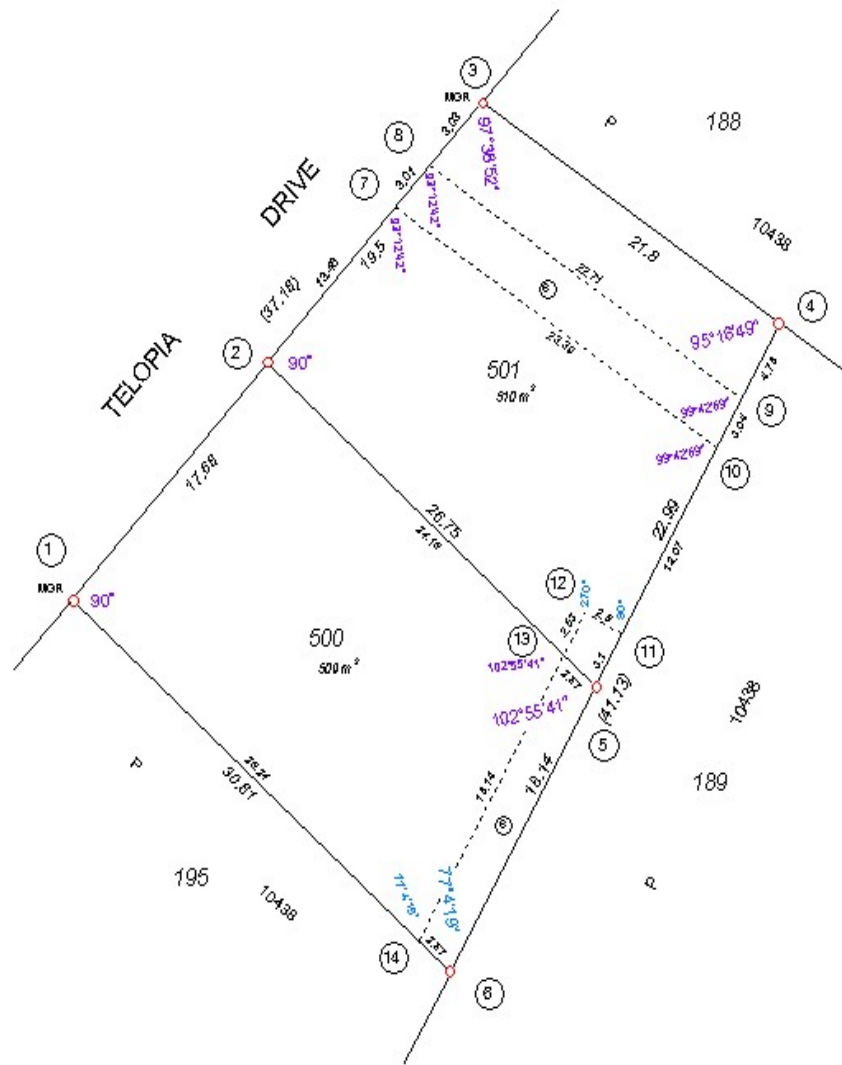
The “line type” attributes used for lines of easement polygons are to be as follows;

- “R”, Cadastral Road – where the easement line coincides with a road boundary (eg. line 7-8 on sketch 1);
- “I”, Cadastral Internal – where the easement line coincides with an internal cadastral boundary (eg. lines 9-10, 11-5, 5-6, 13-5 & 14-6 on sketch 1);

- “E”, Easement – where the easement line does not coincide with a cadastral boundary (eg. line 14-13, 13-12, 12-11, 8-9 & 10-7 on sketch 1).

The “Angle Codes” (ie. the “angderiv” attributes) for angles of all easement polygons (old or new) are to have attributes of *MEASURED*.

Where deposited plans are amended following lodgement at DOLA, by the addition or deletion of easements, the Manager Plan Registration (or delegate) has discretion on whether a replacement CSD file from the surveyor is required.



**Sketch 1**

## **ROAD POLYGONS**

To ensure roads are depicted correctly in DOLA's spatial systems road polygons **must** be captured in CSD files in accordance with the full extent of the road name (including truncations) on the plan. Where roads are captured in segments, between cosecants and/or with truncations, each segment **must** have the correct road name.

Road names must not be abbreviated (eg. Use "John Street" not "John St"). This also applies to the road names in the street addresses attached to lots in the CSD files.

**BARRY CRIBB**  
**INSPECTOR OF PLANS AND SURVEYS**

22 March 2002